

# Spb Mobile DVD User Manual



## Copyright Notice

© 2007 Spb Software House. All rights reserved. Information in this file is subject to change without notice and does not represent a commitment on the part of Spb Software House. All company and product names mentioned in the manual may be trademarks or registered trademarks of their respective owners.

## Table of Contents

<b>OVERVIEW .....</b>	<b>3</b>
SOFTWARE FEATURES .....	3
<b>INSTALLATION .....</b>	<b>5</b>
SYSTEM REQUIREMENTS .....	5
INSTALLING SPB MOBILE DVD .....	5
ACTIVATION .....	6
UNINSTALL YOUR SOFTWARE .....	6
<b>CONVERTING YOUR DVD MOVIE.....</b>	<b>7</b>
SOURCE SELECTION .....	7
SELECTING DVD SETTINGS .....	7
PART TO CONVERT .....	8
FILE FORMAT AND RESOLUTION.....	8
QUALITY AND SIZE .....	9
OUTPUT FILE .....	10
CONVERTING VIDEO.....	10
<b>TECHNICAL SUPPORT .....</b>	<b>11</b>
ABOUT THE TRIAL VERSION .....	11
BEFORE CONTACTING TECHNICAL SUPPORT .....	11
CONTACTING TECHNICAL SUPPORT .....	12

## Overview

Spb Mobile DVD is a desktop application providing users with a quick and easy way to convert DVDs and video files to the mobile format. Using Spb Mobile DVD, you can playback your movies with the highest possible speed and true real-time preview on your Pocket PC. From now on, you can enjoy DVD titles in high-resolution display directly from your Pocket PC.

## Software Features

### **Fastest possible conversion speed**

Spb Mobile DVD is optimized for the fastest possible work on both one core and dual core processors. On a modern PC it is possible to convert a 2 hour long DVD film in 20 minutes, although the conversion speed depends on many factors including CPU, installed DVD player, output video resolution, output video format, video quality and zooming mode.

### **Adjustable quality with real-time preview**

It's up to user to find a compromise between the file size and video quality. Spb Mobile DVD provides several useful quality presets to make user choice easier. If the size/quality settings are wrong, it may happen that the conversion video quality is unacceptable and the whole conversion procedure must be repeated. This "what-if method" can be very annoying. To avoid such problems Spb Mobile DVD offers a unique true real-time preview feature, which allows users to see the result even before the conversion starts.

### **No additional software needed on Pocket PC**

Spb Mobile DVD allows users to convert movies into WMV format which is a native Pocket PC video format and it can be played on any Pocket PC with no additional software installed. On the other hand, installing of additional Pocket PC software (like the free BetaPlayer) that supports Xvid format is preferred both in size and video quality.

### **DVD and video file sources**

Spb Mobile DVD converts DVD disks and video files such as (WMV, AVI, MPEG, PVR, MOV) for watching on Pocket PC devices. The program is implemented as an easy step-by-step wizard that allows users to visually set conversion settings like zooming and video quality.

### **Conversion to both WMV and Xvid formats**

The output video is specially optimized for Pocket PC playback, both WMV and Xvid are supported. WMV format is the pre-installed Pocket PC video format and Xvid format will offer higher quality video at smaller file sizes.

### **Possibility to convert an entire movie or only a part of it**

One can either convert an entire movie or select either a predefined chapter like bonus materials from DVD or a custom part to convert. In case of a custom part you can visually select the part of the movie you want to convert for a mobile device by marking its start and end points.

**Dual core CPU support**

Spb Mobile DVD supports dual core CPU computer system such as Pentium D, Intel(R) Core Duo(TM) processor and Core 2 Duo processor based system that delivers more computing capabilities that enable you to explore new ways to accomplish and enjoy performance-intensive tasks on your PC.

**Support for slow 200MHz Pocket PC devices**

Video files generated by Spb Mobile DVD are specially optimized for playback on Pocket PC. Even if you have a slow 200MHz Pocket PC Phone Edition device you can watch movies without lost frames by using Xvid output video format along with TCPMP (BetaPlayer) which is strongly recommended for such devices.

**qVGA, VGA and square screen support**

For those who have VGA Pocket PC devices and want to convert DVD into VGA quality.

## Installation

Spb Mobile DVD is well known for its ease of installation. Under most circumstances installing Spb Mobile DVD is a very simple process and takes less than ten minutes to complete. The following installation guide will help you.

### System Requirements

Make sure your system meets the following minimum requirements before installation.

#### **DVD software decoders installed into the system**

Spb Mobile DVD does not provide built-in MPEG2 and AC3 decoders. It uses DirectShow-compatible DVD decoders installed into the system. In most cases DVD decoders are already installed with the DVD player which goes with every DVD drive on OEM CD. But for some reasons they may be lost. In that case you need to restore decoders from an OEM CD by installing a 3-rd party compatible DVD player. We recommend you to install Intervideo WinDVD or Cyberlink PowerDVD.

**Note:** Windows Vista Ultimate edition and Home Premium edition users are also required to install additional DVD decoder software into the system.

#### **Hardware Requirement**

Windows 98/2000/XP/Vista Operating System.

Audio card supporting 44.1KHz or 48KHz sampling rate

At least 128MB main memory

Display card supporting DirectDraw Standard

Processor: Intel Pentium II 266MHz or above /Celeron 300a or above; AMD K6-2 300 or above.

### Installing Spb Mobile DVD

After you have downloaded the Spb Mobile DVD file you should install it on your desktop PC. When you run the software installer on your desktop PC it will ask you to accept the license agreement and will start the software installation program. You will not be prompted for the location where you want the software to be installed. The Program destination folder set to be C:\Program Files\Spb Software House\Spb Mobile DVD by default.

You can start to run Spb Mobile DVD by clicking on Spb Mobile DVD program in the folder "Start/Programs/Spb Software House/Spb Mobile DVD.

## Activation

Product Activation works by verifying that a software program's product key has not been used on more personal computers than intended by the software's license. You use an activation wizard to provide the serial number to Spb Software House either through a secure transfer over the Internet, or by Manual activation. A confirmation ID is sent back to your machine to activate your product. If you have not activated Spb Mobile DVD, you will be reminded each time you run the application until the end of the trial version period of 14 days. If you have not activated Spb Mobile DVD within this timeframe, you will need to do so to continue using it.

### Automatic activation

If you choose to activate your product over the Internet, upon your submission the activation wizard will detect your Internet connection and connect to a secure server to transfer your serial number to Spb Software House. To obtain the serial number you need to purchase Spb Mobile DVD software license and you will receive your serial number by Email. A confirmation ID is passed back to your computer, automatically activating Spb Mobile DVD. This process normally takes just a few seconds to complete. No personally identifiable information is required to activate your product.

### Manual activation

If your PC is not connected to the internet or by any reason the automatic activation does not work (for example is blocked by firewall) you can use manual activation. When you purchase Spb Mobile DVD software you obtain a 12 digits serial number (registration ID). You should enter it in the registration dialog and check "I do not have internet connection Activate me offline" and hit 'activate' button. Then you should do the following:

1. Go to <http://spbactivation.com>
2. Copy your installation ID (16 characters) and enter it on the site.
3. Enter your name and Email (optional).
4. Hit 'activate' button.
5. You will get the confirmation ID (8 characters).
6. Copy this confirmation ID to the program and hit 'activate'.

## Uninstall Your Software

If you need to uninstall your Spb Mobile DVD software for any reason, you can do so from the Windows Control Panel. To uninstall your Spb mobile DVD software do the following:

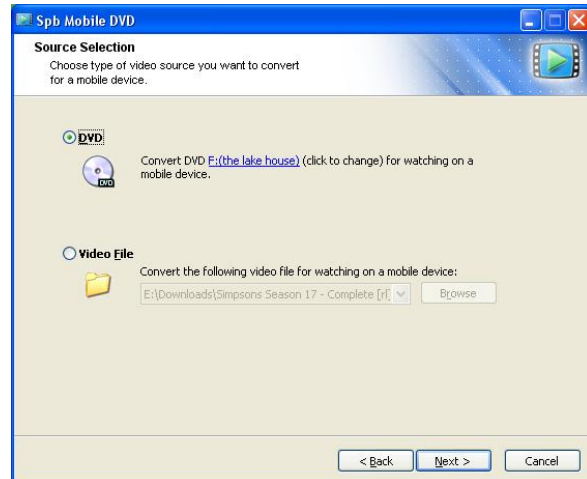
1. Click Start > Control Panel.
2. Double-click Add or Remove Programs.
3. Select the program name and then click **Change/Remove**.
4. Follow the uninstall wizard to remove the program.

## Converting your DVD Movie

Converting a DVD to a file has been usually defined as a complex task that needs an advanced user to accomplish. However, with our user friendly interface we ensure smooth navigation as you work with the application. The converting process includes seven steps.

### Source Selection

- Select **DVD** option to convert a DVD movie from your CD-ROM drive, if you have more than one CD-ROM drive or your DVD movie stored on your local hard drive then you may click the underlined link to open browse window to specify the file path.
- Select the **Video File** option to convert a video clip stored locally on your hard drive. Click the Browse button to specify which file to convert. The next steps are the same as in DVD option except Selecting DVD setting which will not be required for video files.



To continue Click **Next**

### Selecting DVD Settings

- First wait for the DVD menu to appear. You can use all DVD menu controls in order to switch to bonus materials selection, scene selection, languages and subtitles.
- After configuring all these menu settings start the movie.
- Wait for the **Next** button to get enabled, which means that the movie has started and proceed with clicking this button. If it is needed you can use **DVD Menu** button to go back to the DVD main menu. You also have the **play\pause** button next to the **Mute on\off** button and navigational slider for more flexibility. Click along the slider to jump to other locations.



To continue Click **Next**

## Part To Convert

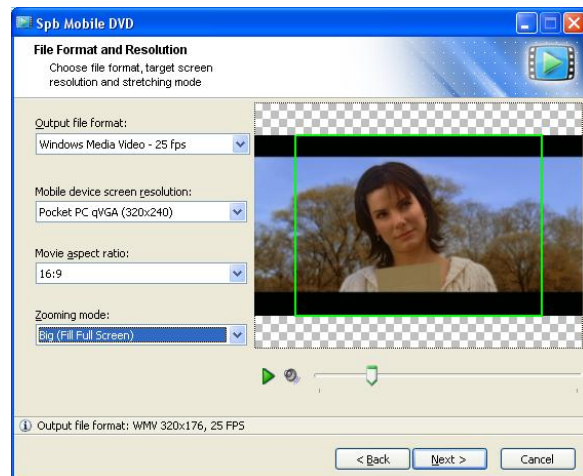
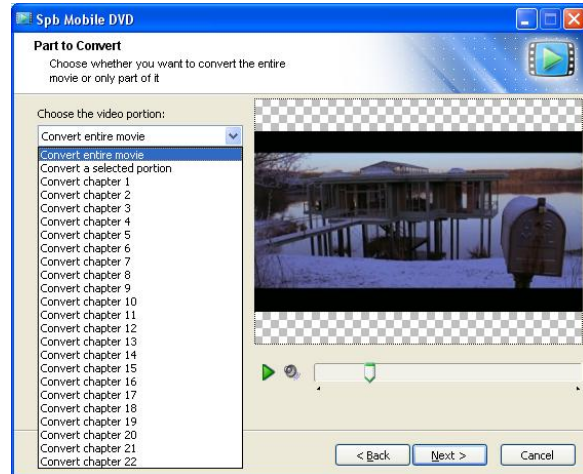
Choose the desired value from **Choose the video portion** drop-down menu that has the following options:

- **Convert entire movie** to convert your movie from the very beginning to the very end.
- **Convert a selected portion** to convert your favorite part of the movie by pointing out the start point and the end point visually as you see it in the preview screen. Move the progress bar pointer to the start of your fragment where you wish your movie to start from, then press the **Mark Begin** button. Now proceed by moving the progress bar pointer to the end of your fragment then press the **Mark End** button.
- **Convert chapter** by simply selecting the scene number you would like to convert. All the chapters which exist in your DVD title will be included in the slid menu. To convert bonus material chapters, you have to select which bonus material you want (if your DVD can offer extra materials) from the DVD main menu. Click on **Convert chapter 1,2,3** etc... to select your portion.

To continue Click **Next**

## File Format and Resolution

- **Output file format:** WMV files can be played by Windows Media Player installed on every Pocket PC device. So if you choose one of the WMV formats you will be sure that your movies will be played on your Pocket PC. Please also specify the FPS (frames per second) value, when choosing the WMV option. We recommend you to select the higher FPS value (25) only if your device has high CPU performance (300MHz or above). Otherwise the movie may be played with skips. The higher FPS value provides better movie quality. For advanced users we recommend to save movies in Xvid format because it provides even better



properties. This format requires extra software installed on your Pocket PC such as TCPMP BetaPlayer.

- **Mobile device screen resolution:** Choose one of the predefined screen resolutions listed in this menu for pocket PC and Smartphones. Check your device information to know your screen resolution. If you have a VGA screen you can select the Pocket PC VGA (640x480) resolution, but if you want to reduce the file size and provide better performance you can select the qVGA resolution to use the 200% zoom when watching the movie. In this case the Xvid format gives better results.
- **Movie aspect ratio:** Select the aspect ratio of the converted movie (the width/height ratio). You will see the result immediately on the screen when the movie is played. Most DVD movies nowadays are in wide screen (2.35:1) format.
- **Zooming mode:** Choose the option that best suits your needs. There are three choices available:
  - **Small (Fit to Screen):** Use this option to avoid any cropping. The full picture will be resized to fit the device screen, but the details will be smaller.
  - **Medium (Best Fit):** This is an intermediate option between small and big zooming modes. It is a compromise between the two options (Small and Big).
  - **Big (Fill Full Screen):** Use this option to make the video fill the entire screen of your Pocket PC. The picture will look larger and there will not be any unused space, but small parts of the source picture on the left and right sides will be cropped.

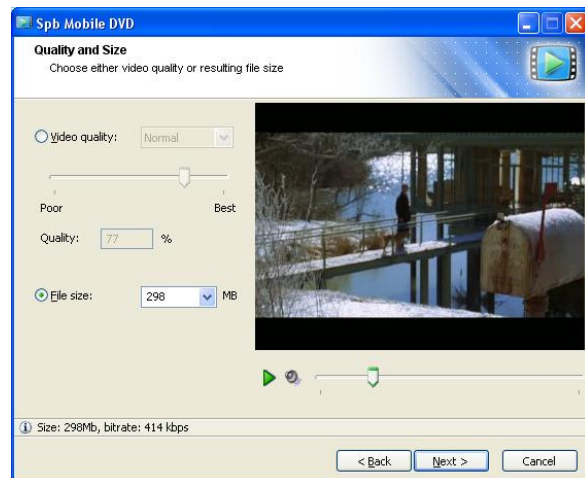
**Note:** You can always see a true real-time preview of the output video when you change the options.

To continue Click **Next**

## Quality and Size

There is always a tradeoff between the video quality and the resulting file size. You can either limit the output file size manually or just choose the video quality. Change one parameter and see how it reflects the other.

- **Video quality:** You can choose from three presets (Poor, Normal or Best) or choose the Custom quality. See how the change in quality reflects the output file size and the picture in the preview window.



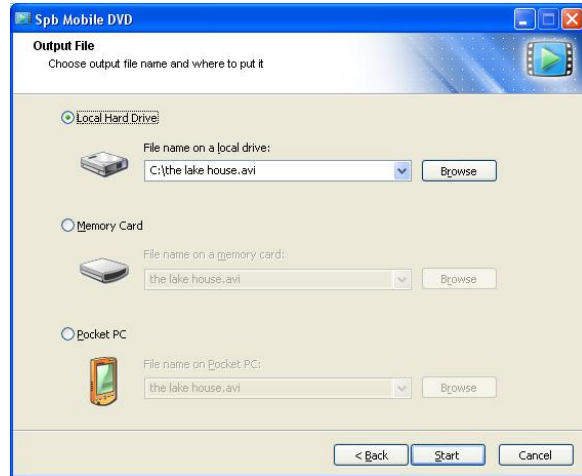
- **File size:** By using this option you can approximately limit the output file size. The video quality corresponding to the requested file size which will be automatically calculated. The information bar at the bottom of the window provides you with the approximate output file size.

To continue Click **Next**

## Output File

Select the destination of the output file:

- **Local Hard Drive:** Select this option if you want to create the converted movie file on your hard drive and provide the desired file name and folder.
- **Memory Card:** If you have a storage card drive, you can create a file directly on it by selecting this option.
- **Pocket PC:** If you select this option, the file will be created on your Pocket PC in a specified folder. The device should be connected via ActiveSync™ during the conversion process. Uploading speed depends on ActiveSync™ connection and in most cases it may delay the conversion process.

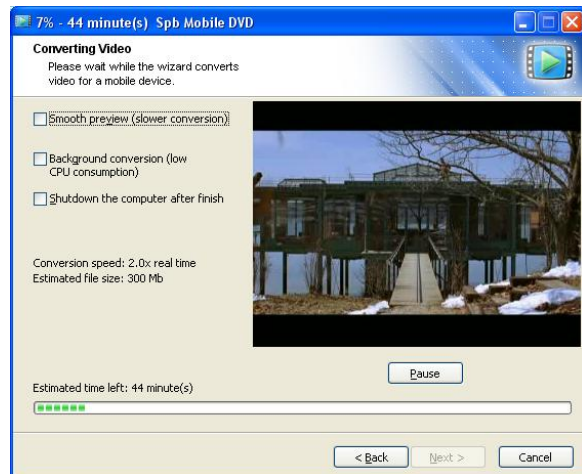


To continue Click **Next**

## Converting Video

Even when the process of video conversion is launched you can customize it:

- **Smooth preview:** If you select this option, the movie will be shown smoothly, almost in real-time rate. Otherwise, you will be shown only the separate frames with longer intervals. Enabling the smooth preview will slow down the conversion.
- **Background conversion:** If this option is unselected, Spb Mobile DVD will take all your CPU resource and the conversion will



be done as fast as possible. However, if you wish to work with other applications, while the movie is being converted, you can enable the background conversion, which requires less CPU consumption.

- **Shutdown the computer after finishing:** If the conversion is expected to finish only after you leave the computer, you can select this option. When the conversion is over, the PC will shut down.

**Note:** The estimated time left is shown at the bottom of the window.

When the process of video conversion is over you will be shown a congratulations window providing you with the converting results like processing time, size and name of the file. To open the contents folder please enable the check box, press finish to end the wizard.

## Technical Support

This chapter contains technical support information. It includes all the information to find the answers you need to assist you. You may also find answers quickly by contacting your local distributor/dealer.

### About the trial version

The trial version of Spb Mobile DVD has some limitations. You cannot convert more than one half of each movie. The converted versions show you NAG screens and the trial version expires within 14 days after installation. You can use the trial version only to check how Spb Mobile DVD works. In order to remove the trial limitations you need to purchase the license. Please purchase the license to be able to use the full version of Spb Mobile DVD. There is no need to re-install the Spb Mobile DVD in order to use the full version.

### Before Contacting Technical Support

Please read this section before contacting Technical Support, it includes most common important issues users might face.

- **DVD decoders**  
Mobile DVD requires proper DVD decoders to be installed in your system. A necessary condition of stable Spb Mobile DVD functionality is possibility to play the DVD in **Windows Media Player**. In most cases this is enough. But if it's not possible you need to install DVD decoder's software (WinDVD or PowerDVD). If you have reinstalled Windows recently, please make sure to install DVD decoders from the OEM CD that usually comes with the PC or DVD drive.
- **Subtitles**  
Cyberlink video decoder does not show subtitles correctly in maximum speed mode (conversion mode). If you are faced with the problem of short time subtitles displaying, please do the following:
  1. Press Start Menu->Run, type "regedit" and press enter.

2. Go to HKEY\_LOCAL\_MACHINE\Software\Spb Software House\Spb Mobile DVD\ registry key
  3. Create DWORD value named CyberLinkSpeedMode and set 01. Restart Spb Mobile DVD and try again. Cyberlink should show subtitles normally but conversion speed may fall down to 0.6 x.
- **Nero 6 decoders**

Unfortunately Spb Mobile DVD has compatibility problems with Nero ShowTime 2 decoders which go with Nero6. Usually another (PowerDVD or WinDVD) DVD player also goes with Nero on OEM CDs. But if for some reason it does not. Additional software will need to be installed or you will need to update Nero decoders to Nero 7 (ShowTime 3).
  - **Windows 2000**

If you are running Windows 2000 you might need to install Windows Media Encoder 9 Series to be able to create WMV output. You can download Windows Media Encoder 9 Series from Microsoft website:  
<http://www.microsoft.com/windows/windowsmedia/forpros/encoder/default.mspx>
  - **Windows Vista**

Spb Mobile DVD starting from 1.2 version is compatible with Microsoft Windows Vista. Microsoft Windows Vista Ultimate edition and Home Premium edition have built-in DVD decoders from Microsoft which are protected from unapproved usage (like copying/conversion DVDs). If you have Ultimate or Home Premium edition you will need to install additional software. Hint: you may have PowerDVD or WinDVD player on OEM CD from your DVD drive manufacturer.
  - **Playing Xvid Files on a Mobile Device**

In order to play Xvid files on your Pocket PC you will have to install some additional software that supports this video format. We recommend you to use the free BetaPlayer (also known as TCPMP). You can find more information at: <http://tcpmp.en.softonic.com/pocket>  
<http://www.freewareppc.com/multimedia/tcpmp.shtml>

Please find more information about the Xvid format and supported players at:  
<http://en.wikipedia.org/wiki/Xvid>

## Contacting Technical Support

Please take advantage of one of the Spb Software House free technical support options:

- Consult the User Manual or the online help installed with your program.
- Refer to the Frequently Asked Questions (FAQs) in the Support section of the Spb Software House Website. The FAQs may have information and helpful hints that are more current than the User Manual and online help.  
<http://www.spbsoftwarehouse.com/support>
- Spb Software House provides a wide range of web support options, including FAQs and a user community forum. Solutions to your problems are available

24 hours a day at no cost on the Spb Club web site. You must first register as a member before using Spb Club web support.

<http://www.spbclub.com/forum/>

**Note:** If some problems arise, we can ask you to send us LOG files to find out the reasons of the problem. So, if we ask you to do it, please proceed with the following steps:

1. Run Spb Mobile DVD and try to reproduce the problem.
2. Important! Close Spb Mobile DVD after that.
3. Click Start > Run, type %temp% and click OK to open your temp folder.
4. Find SpbMobileDVDLog.dat file in temp folder. It is a crypted text file containing information about codecs you have installed as well as internal trace information about the last run of Spb Mobile DVD. This information will help us to find out the reasons of the problem.