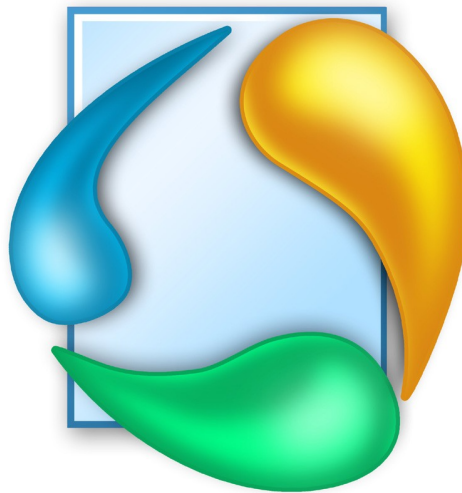


Spb Imageer User Manual



Copyright Notice

© 2009 Spb Software. All rights reserved. Information in this manual is subject to change without notice and does not represent a commitment on the part of Spb Software. All company and product names mentioned in the manual may be trademarks or registered trademarks of their respective owners.

Table of Contents

Table of Contents.....	2
Overview.....	3
Software Features.....	3
Installation.....	5
System Requirements.....	5
Installing	5
Registration	5
Uninstalling.....	5
Configuring Spb Imageer.....	6
Spb Imageer Options.....	6
Picture	6
File List.....	6
Slideshow.....	7
Notes.....	7
Edit.....	8
Web.....	8
Associations.....	8
Spb Screenshot Tool Options.....	9
Using Spb Imageer.....	10
Image List.....	10
Image View.....	10
Notes Mode.....	11
Edit Mode.....	11
Create an Album.....	12
Publish to the Web Wizard.....	13
Technical Support.....	15
About the Trial Version.....	15
Contacting Technical Support.....	15

Overview

Spb Imageer is a very powerful imaging engine designed specifically to streamline common processes that Pocket PC users perform with digital photos. Equipped with an incredibly rich set of features, Spb Imageer will make your work with images fast, comfortable and joyful.

Software Features

One-click slideshow

Tap on the slideshow button to quickly start showing off your photos to family and friends. Slideshow preferences include settings for the delay between photos, rotating them as needed, looping the show, and choosing from 22 different effects with smooth transitions.

Multiple thumbnail options

In the detailed thumbnail mode you can see thumbnails and the information on the image files: name, time and date of creation, size in bytes and size in pixels, along with the ability to quickly open the image properties dialog.

Picture editing

The most frequently used editor actions such as brightness, contrast, auto-level, crop, anti red-eye, and more are available from the Edit toolbar.

Storage card notification with common tasks

When you insert a storage card into your device with any photos on it, the storage card notification window will appear with 6 options to choose from. You can choose to View Slideshow, Browse Pictures, Optimize and Save to Folder, Create an Album, Publish to the Web, or Open in File Explorer. In order to use this feature you need to enable it from Spb Imageer options.

Batch optimizing of photos

Images stored on your Pocket PC might be far from optimal. It does not make sense to keep large images, which will be shown small on a Pocket PC screen. Instead, you can optimize images for the best storage and usage on your Pocket PC.

The optimization process comes with the following processes:

- Optimize and Create Album Wizard
- Optimize and Save to Folder Wizard
- Optimize and Publish to Web Wizard
- Copying images from a desktop computer
- Adding a picture to an existing album

Web publishing

Share your images with family and friends by publishing right from your Pocket PC to a website. Select the photo(s) you want to publish and optimize them for publishing using a wizard in six easy steps.. The images are published to the Flickr Photos, Fotki.com, Foto Quelle.

Album Creation and Sharing

Do you want to quickly take out your Pocket PC to show off your pictures of last week events to your friends or family? Spb Imageer album is a single file that contains your optimized pictures slideshow ready in one tap. The Album provides quick access to your pictures for showing them on your Pocket PC.

Rich Picture Notes

There are three types of notes you can attach to your images text notes, audio notes, and drawings. You can use this powerful tool to make your images come alive.

Powerful Screenshot Tool

Spb Screenshot maker is a tool for screen captures. Screenshot images can be in BMP or PNG format. It helps you to build professional screenshots.

Installation

The installation of Spb Imageer is a very simple process and takes less than five minutes to complete. The following installation guide will help you.

System Requirements

Make sure your system meets the following minimum requirements before installation:

Windows Mobile 2003, Windows Mobile 5, Windows Mobile 6 Professional or Classic.



Installing

After you have [downloaded](#) the Spb Imageer distribution file you should install it to your device. For a successful installation you will need a Pocket PC device attached to your Windows desktop PC. You will also need [Microsoft ActiveSync](#) software in order to install Spb Imageer to your device.

When you run the software installer on your desktop PC it will ask you to accept the license agreement and will start the installation program. You will be prompted for the location where you want the software to be installed. You will also be prompted to install the ActiveSync filter. If you have a digital camera and want to insert your external storage card and use Spb Imageer, then you should install Spb Imageer on the device in main memory.

Note: Microsoft ActiveSync works only with Windows XP SP2 or earlier. If you have Windows Vista, your synchronization settings will be managed through the Windows Mobile Device Center. Windows Mobile Device Center is available through the [Windows Mobile Device Center page](#).

Registration

You will be able to use Spb Imageer until the end of the trial version period of 15 days from the first installation. If you have not registered Spb Imageer within this timeframe, you will need to do so to continue using it.

To obtain the serial number you need to [purchase](#) an Spb Imageer software license. You will receive your serial number by e-mail.

Uninstalling

To remove the product from your Pocket PC:

1. Go to **Start menu > Settings**
2. Open **System** and tap on **Remove Programs**
3. Select **Spb Imageer** from the list and tap on the **Remove** button
4. Choose **Yes** to confirm removing

Configuring Spb Imageer

After Spb Imageer is installed on your Pocket PC it is ready to use. You can now customize the settings and behavior(s).

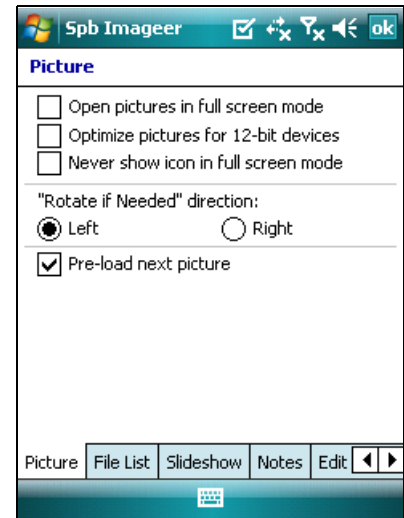
Spb Imageer Options

You may customize Spb Imageer to fit your needs. To begin go to the main menu and select the **Options...** menu item. The Options screen includes the following tabs which you can use to adjust your settings:

Picture

There are some common picture options you can customize.

- **Open pictures in full screen mode:** If this option is enabled, all the pictures opened from the image list are displayed in full screen mode by default.
- **Optimize pictures for 12 bit devices:** If your device does not support 16 bit color pictures (very few old devices) it may essentially distort colors. In order to prevent pictures from being shown with stepped color changing the smooth algorithm is implemented. Select this option to apply this algorithm.
- **Never show icon in full screen mode:** If you tap the screen in full screen mode a small icon button appears for a few seconds in the low left corner to quit the full screen mode when tapped. However you can disable this button by enabling this option. When you want to return to the regular viewing mode simply double-tap the image.
- **"Rotate if Needed" direction:** Choose, in which direction (right or left) images will be rotated if the 'Rotate if Needed' mode is on.
- **Pre-load next picture:** Spb Imageer will automatically load the next image into memory while the current one is being displayed. This will provide faster image loading when viewing several pictures in sequence.



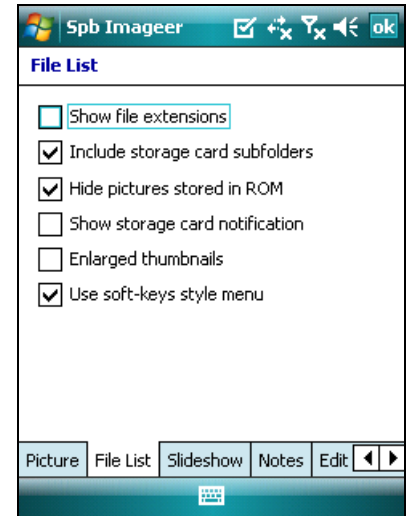
File List

Here you can configure the file list view options.

- **Show filenames extension:** Enable the display of the extension of the graphic file along with the file name in the image list.
- **Include storage card subfolders:** If enabled, Spb Imageer will display all images found on a storage card(s) at once in an image list. If not, you will have to open every folder to see the contents.
- **Hide pictures stored in ROM:** Enable this option to prevent pictures stored in ROM from being displayed and added to your image list. The ROM includes many system images that you may not want to view.

Spb Imageer User Manual

- **Show storage card notification:** If enabled, you will receive a notification window every time you insert a storage card into your device with any photos on it. The notification window gives you 6 options. You can choose to View a Slideshow, Browse Pictures, Optimize and Save to Folder, Create an Album, Publish to the Web, or Open in File Explorer. After a few seconds the window will minimize if you do not take any action. You can tap the storage card icon on your top toolbar to open the choices list again.
- **Enlarged thumbnails:** If selected, the thumbnails will be cropped to cover more area in thumbnail view mode.
- **Use soft-keys style menu:** Enable or disable the soft-keys menu style instead of the button toolbar.



Slideshow

The slideshow mode has the following parameters to customize:

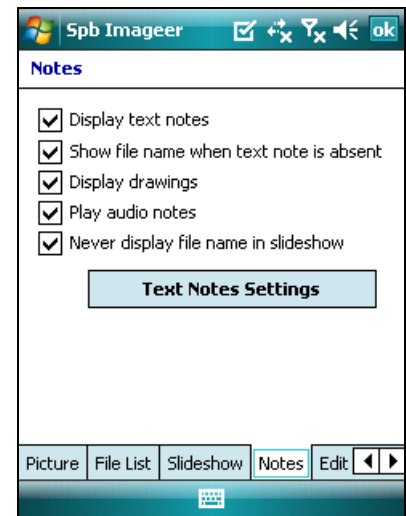
- **Rotate if Needed:** Select to apply the 'Rotate if Needed' mode to images shown in slideshow mode.
- **Loop:** Select to loop the image show in slideshow mode.
- **Delay:** Provide the desired delay time.
- **Effect:** Select the desired image view effect. Look at the sample preview to see the effect result.



Notes

Here you can configure your notes options.

- **Display text notes:** Enable to display the text notes along with images.
- **Show file name when text note is absent:** When enabled, the image file name will be displayed if there is no text note provided. The file name font will be formatted accordingly to the Default font preferences for text notes.
- **Display drawings:** Enable this option to display drawings, if any, on images.
- **Play audio notes:** Enable this option to play the audio file that has been added to a photo in the photo view.
- **Never display file name in slideshow:** Enable or disable the display of the image file name in the slideshow.



Spb Imageer User Manual

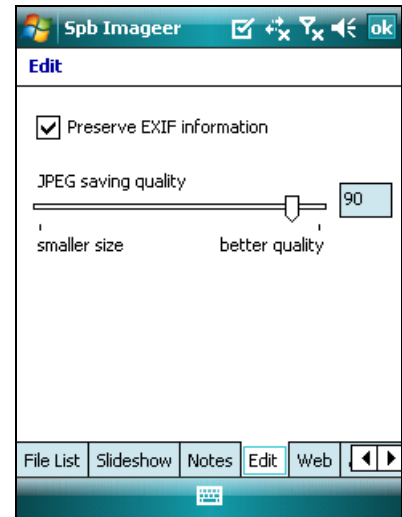
- **Text Notes Settings:** Tap this button to customize the default text note font, size, position, and appearance.

Note: If you remove any of these selections, the created text, drawing, or audio notes will still exist, but will not be displayed (played) along with images.

Edit

The edit tab has the following parameters to customize:

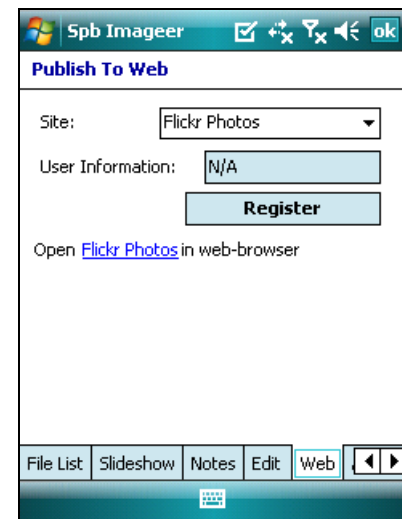
- **Preserve EXIF information:** Some image files may contain additional information, called Exif, an exchangeable jpeg-encoded image file format. Many digital cameras add this information to photos they produce. When this option is enabled the Exif information will be kept after any image editing.
- **Jpeg saving quality:** Move the slide-bar to choose the desired JPEG saving quality coefficient. This quality will be applied when saving an image after editing. Better quality results a bigger file size and vice versa.



Web

Here you can customize publishing to the web options.

- **Site:** Select where your photos will be published to. You have three websites to choose from Flickr Photos, Fotki.com, or Foto Quelle.
- **User Information:** Here you can see your registration information for the selected website. Tap on the **Register** button to automatically open the registration webpage to set your free account user name and password.
- **Open Flickr Photos in web-browser:** Tap on [Flickr Photos](#) to open the Flickr website in the Pocket Internet Explorer.

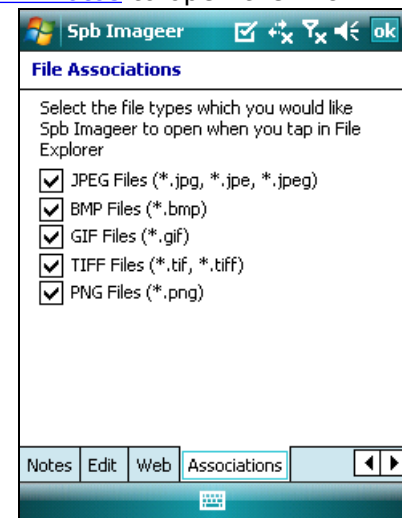


Note: An Internet connection is required for the registration process.

Associations

You may assign some types of image files to be opened with Spb Imageer when they are tapped in File Explorer. Select the corresponding check boxes.

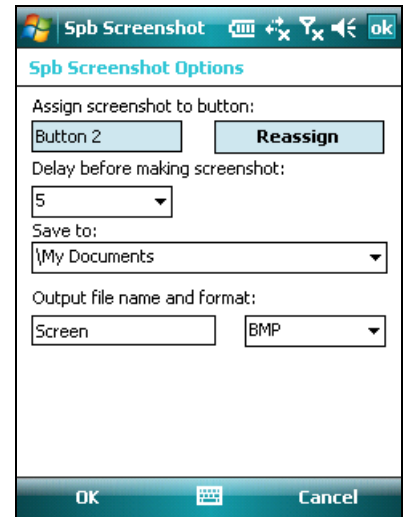
Note: Spb Imageer does show all supported image files. In these options you can only set which image files to be opened with Spb Imageer.



Spb Screenshot Tool Options

Spb Screenshot maker is a standalone application for screen capturing. To open its options you need first to run the application which you can find in the Programs. After you open it select **Settings...** from the main menu.

- **Assign screenshot to button:** Assign your device hardware button (ok button, camera, or voice recorder) to capture your device screen with one press on the assigned button. Tap on the **Reassign** button and press on the hardware key that you would like to assign. In the text box you will see the assigned hardware key name.
- **Delay before making screenshot:** Select to defer taking the screenshot after pressing the assigned hardware key. Choose the delay time from the dropdown list below.
- **Save to:** Select the storage folder for the taken screenshots.
- **Output file name and format:** You can set a name for the screenshots. For example if you set the name to "Screen", the second screenshot will automatically have the name "Screen1" then "Screen2" for the next screenshot and so on. You can also select the format of the image file either PNG or BMP. The Portable Network Graphics format (PNG) will take less storage space than the BMP format.



Using Spb Imageer

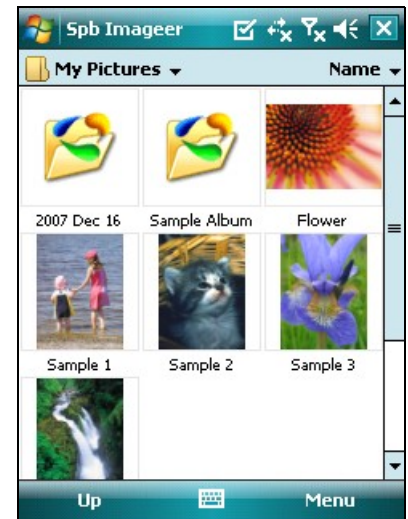
Spb Imageer has easy to use functions and tools. This chapter contains all the information you will need to be able to use all of the Spb Imageer powerful features.

Image List

In the main Spb Imageer window you can see all of the pictures in the My Pictures folder. This view can be changed from the **Menu > View > File List** submenu to thumbnails, detailed thumbnails view, or a simple list. You can also start a slideshow and open the photo's properties.

The main window has a built-in file browser to quickly find any pictures you may have on your device.

- Tap the **Up** softkey to go up in the folders hierarchy.
- Tap on the upper left **Show** menu (current folder by default) to browse your device for pictures.
- Tap on the upper right **Sort By** menu (Name by default) to arrange your pictures according to name, date, size, or type.



The main **Menu** allows you to create a new folder, create an album, publish to the Web, access the options settings, and register the product.

Tapping and holding on the photo, album, or folder brings up many useful commands in its context menu. Tapping on a photo opens the Image View screen.

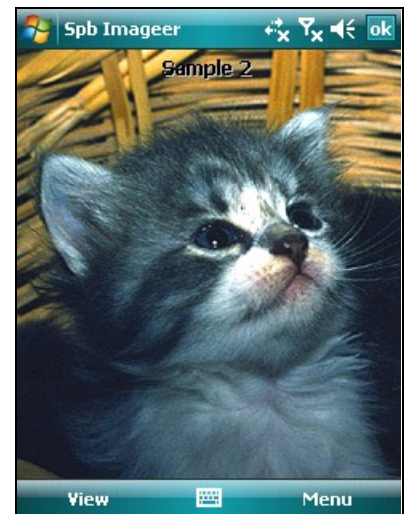
Image View

Spb Imageer opens pictures according to predefined preferences. If your picture is opened in the full screen mode then double-tap or press the Action hardware button on it to return to the image view.

There are several zoom levels, rotation choices, go to the next/previous image, start slideshow, and open image properties in the **View** menu

The main **Menu** allows you to save as, delete, add note, open the editing mode, access the options, and register the product.

When the displayed picture is larger than the screen area, you can scroll it in any direction using your stylus.



Notes Mode

When you tap the **Note** button, the Notes toolbar is displayed. Left to right on this toolbar is: Notes menu, Add Text button, Add Drawings button, and Voice Recording button. From the Notes menu you can remove any added notes and play the recorded audio file.

- With the Add Text button, you can add a text comment to the top or bottom of your photo. Just select the color and font style for the displayed text, or use the default setting (see [notes options](#)).
- With the Drawing button, you can draw sketches. Use the drawing toolbar to change the line width and color, undo draw button, repeat draw button, done button, and cancel button.
- With the Voice Recording button you can add an audio file to be played when displaying the photo. You can start recording, stop, or play recorded audio file using the record toolbar.



Once text comments, sketches, or voice records have been added to a photo, these will display or play in the main picture view (unless you disable the corresponding options). Added notes will display/play during slideshow playback as well.

Edit Mode

Spb Imageer allows you to edit your images. Following is the list of available editor actions and commands:

From the **Edit** menu you can undo, redo, resize, rotate, filter, colors adjustment, return to the last saved edited picture, and save a copy of the edited picture.

- **Crop:** By tapping this button, you can crop a rectangular area of a currently displayed image and make a separate image out of it. Move your stylus over the image to select a desired area. You will be asked to tap somewhere inside the selected area to finish. The selected area will appear as a new image. Later you can save it in a separate file.
- **Anti Red-Eye:** Tap this button to remove red eye on photos.
- **Brightness, Contrast:** Customize these parameters manually or select the Auto-level command to provide considerable improvement of picture quality, especially for digitalized photos.



After you have finished editing, tap **Save** to save the changes you applied to the picture or select **Edit > Save as...** to save as a new picture and keep the original photo unchanged. Otherwise, tap **Cancel**.

Create an Album...

Spb Imageer album is a single file that contains your edited pictures in the order you want, with notes, and slideshow ready. In the Image List view select **Create an album...** from the main menu to start the album wizard. Optimize and Save to Album steps are:

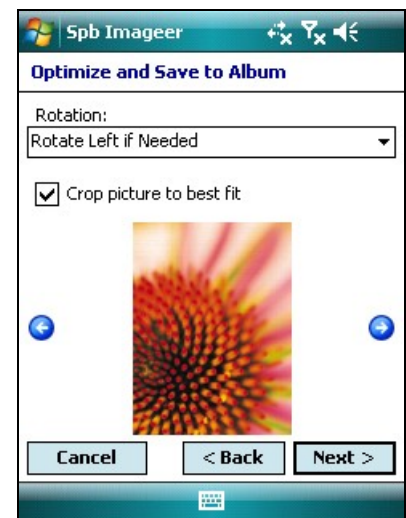
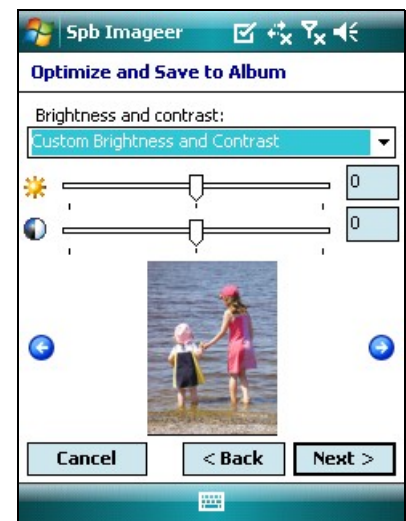
- Select the desired images; they are all displayed as thumbnails. Tap the **Next** button when finished to continue.
- Specify the size of the processed images. You may leave them in the original size, select one of predefined ones, or use a custom variant. Tap the **Next** button when finished to continue.

Note: any selected size will be applied to ALL pictures.

- Adjust parameters such as brightness and contrast.
 - **Original Brightness and Contrast:** These parameters won't be changed.
 - **Auto Brightness and Contrast:** The best brightness and contrast combination will be applied to all pictures.
 - **Custom Brightness and Contrast:** Here you can customize brightness and contrast manually. Move the corresponding sliders and see the result on a displayed picture.

To view other images of the selection, tap on the left or right arrow. Tap the **Next** button when finished to continue.

- This wizard page deals with image rotation and crop settings. If you select **Rotate right if needed**, then the pictures, the height of which is less than their width, will be rotated right. Select **No Rotation** to prevent any rotation. When the height and width of an image are not proportional to the desired size you may select **Crop picture to fit best** and the program will crop the middle part of an image to fulfill a certain area. Some areas of a picture will be lost. Otherwise, leave this checkbox unselected. Tap the **Next** button when finished to continue.
- This page deals with image naming and saving settings.
 - **Rename pictures:** Select a desired renaming scenario:
 - **Do Not Rename Picture:** keeps the original picture name.



- **Add Current Date Prefix:** adds the current date to the original picture name.
- **Add Current Date Prefix and Renumber:** removes the original picture name, adds the current date and a number (1,2,3...).
- **Add Custom Prefix:** adds a custom prefix (specified below) to the original picture name.
- **Add Custom Prefix and Renumber:** removes the original picture name, adds a custom prefix (specified below) and a number (1,2,3...).
- Here you can provide the album name and the storage folder. Tap the **Next** button to continue.
- Customize the optimized JPEG images quality. Move the JPEG quality slide bar to set the desired value. Higher quality provides bigger size/slower loading and vice versa. Tap the **Next** button to start the process.

Later on you can add more pictures to the created album. To do this, copy one or more pictures, then browse an existing album and paste them into it. The Create Album wizard will open automatically and you will be able to optimize the selected images and add them to this album.

Publish to the Web Wizard

After you select the **Publish to Web...** option from the main menu in the Image List view you will go through a 6-step wizard that optimizes the photos for publishing. The images will be published to the Flickr Photos, Fotki.com, or Foto Quelle websites. The first time you will be prompted to set up a free account right from your Pocket PC.

- Select the desired images; they are all displayed as thumbnails. Tap the **Next** button when finished to continue.
- Specify the size of the processed images. You may leave them in the original size, select one of predefined ones, or use a custom variant. Tap the **Next** button when finished to continue.

Note: any selected size will be applied to ALL pictures.

- Adjust such parameters as brightness and contrast.
 - **Original Brightness and Contrast:** These parameters won't be changed.
 - **Auto Brightness and Contrast:** The best brightness and contrast combination will be applied to all pictures.
 - **Custom Brightness and Contrast:** Here you can customize brightness and contrast manually. Move the corresponding sliders and see the result on a displayed picture.

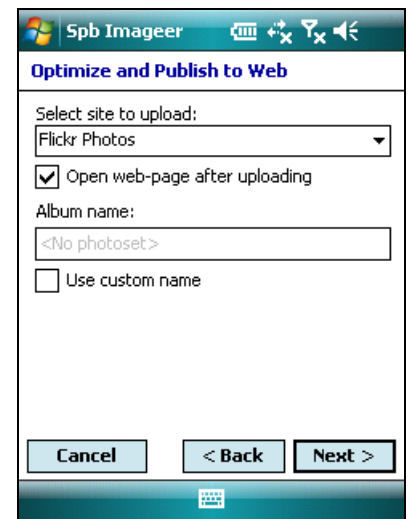
To view other images of the selection, tap the left or right arrow. Tap the **Next** button when finished to continue.

- This wizard page deals with image rotation and crop settings. If you select **Rotate right if needed**, then the pictures, the height of which is less than their width, will be rotated right. Select **No Rotation** to prevent any rotation. When the height and width of an image are not proportional to the desired size you may select **Crop picture to fit best** and the program will crop the middle part of

an image to fulfill a certain area. Some area of a picture will be lost. Otherwise, leave this checkbox unselected. Tap the **Next** button when finished to continue.

- This page deals with image renaming and saving settings.
 - **Rename pictures:** Select a desired renaming scenario:
 - **Do Not Rename Picture:** keeps the original picture name.
 - **Add Current Date Prefix:** adds the current date to the original picture name.
 - **Add Current Date Prefix and Renumber:** removes the original picture name, adds the current date and a number (1,2,3...).
 - **Add Custom Prefix:** adds a custom prefix (specified below) to the original picture name.
 - **Add Custom Prefix and Renumber:** removes the original picture name, adds a custom prefix (specified below) and a number (1,2,3...).
 - Here you can select the website (Flickr Photos, Fotki.com, Foto Quelle) to upload your photos and provide the album name if you prefer to. Tap the **Next** button to continue.
 - Customize the optimized JPEG images quality. Move the JPEG quality slide bar to set the desired value. Higher quality provides bigger size/slower loading and vice versa. Tap the **Next** button to start the process. The program will connect to the server and upload the photos according to the defined options. An Internet connection is required.

Note: You need to obtain an account for the selected website before uploading the photos. If you start publishing to the web wizard without having an account you will be redirected to the registration webpage to set your free account user name and password. See the [Web options](#) for more details.



Spb Imageer

Optimize and Publish to Web

Select site to upload:
Flickr Photos

Open web-page after uploading

Album name:
<No photoset>

Use custom name

Cancel < Back Next >

Technical Support

This chapter contains technical support information. It includes all the information you need to assist you.

About the Trial Version

The trial version of Spb Imageer includes all of the features available in the registered version. The trial version expires within 15 days after the first installation. You can use the trial version only to check how Spb Imageer works. In order to keep using the software you need to purchase the license. There is no need to re-install the Spb Imageer in order to use the full version.

To obtain the serial number you need to [purchase](#) Spb Imageer software license. You will receive your serial number by e-mail. For more information please visit our web site at: <http://www.spbsoftwarehouse.com/products/imageer/support.html>

Contacting Technical Support

Please take advantage of one of the Spb Software House free technical support options:

- Consult the online help installed with your program. From any of Spb Imageer screens select **Help** menu item from the **Start** menu.
- Refer to the Frequently Asked Questions (FAQs) in the Support section of the Spb Software House Web site. The FAQs may have information and helpful hints that are more current than the User Manual: <http://www.spbsoftwarehouse.com/products/imageer/faq.html>
- Ask your technical question or post your feature request in the forum to get a quicker reply directly from the developer team or the user's community. Solutions to your problems are available 24 hours a day at no cost on the Spb Club web site. You must first register as a member before using Spb Club web support: <http://www.spbclub.com/forum/>

Please include the following information to help us isolate the problem:

1. The type of the device that you are using.
2. The software name and version number. Select **Menu** → **About...** to view the software name and version number (example: Spb Imageer, version 1.6, Build 707).
3. Any error messages that accompany the problem.
4. A brief description of how we can recreate the error.
5. Your name and the preferred contacting method.