

WINDOWS MOBILE

Restore your PDA

It is essential to keep a backup of your data for security purposes. But if you're upgrading to a new device, you can restore your content with ease using Spb Backup

FAQ

Can I back up a memory card?

Yes you can. Simply select the option while you're setting up your backup.

Summary: Use Spb Backup to restore your PDA

Difficulty: Beginner

Backing up your data is good practice at the best of times.

The more data you keep on a handheld, the more important it is to have a spare copy of it should things go wrong. But there is more to it than a mere precautionary measure. If you decide to install a ROM update to your handheld, its memory will be wiped. And if you buy a new device, copying your data from one machine to another can be a long-winded task. Spb Backup (www.spbsoftwarehouse.com) represents the quickest and easiest way to do the task on the Windows Mobile platform.

1 Choose your content

Ease of use is really the key feature of Spb Backup. With just a single tap of the first option on the main screen, you can set in progress a full backup of your device. Do it on a regular basis, and you will always be protected against data loss. However, if you are moving to a new handheld

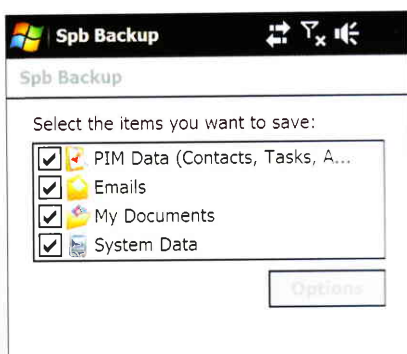


Fig 1 Selective backup

Pick and choose the content to save when moving to a new handheld

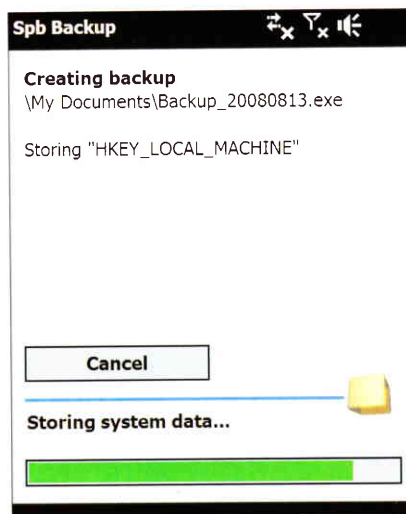


Fig 2 Painless task

Backing up is a quick and easy process, usually taking only a few minutes

you will not want a full system backup, but to concentrate on your files alone. Choose Custom Backup to do this (Fig 1).

2 Begin the backup

Click through the Next buttons to begin backing up. With a Custom backup you will be able to compress and password protect the content if you wish. The process of backing up (Fig 2) will take only a couple of minutes, depending on how much data you have. Your device will then soft reset.

3 The restore process

In your My Documents folder you'll now have an .exe file containing your backup. Keep this file safe on your

desktop or memory card (using the supplied Backup Sync utility), then when you're ready to restore, copy it back onto your device (Fig 3). Hit Restore Backup to begin the process.

4 Upgrade mode

Before restoring the backup you'll need to ensure the correct date and time on your device is set. If you are restoring to a new device, or after a ROM update, select Device or ROM upgrade mode. Then tap on the backup file to begin.

5 Scheduled backups

In order to get the best out of Spb Backup, you should use the Scheduled Backup function to create a backup at intervals of anywhere between one and seven days. It's a good idea to set these to take place in the middle of the night, so that they do not disrupt your regular phone usage. ●

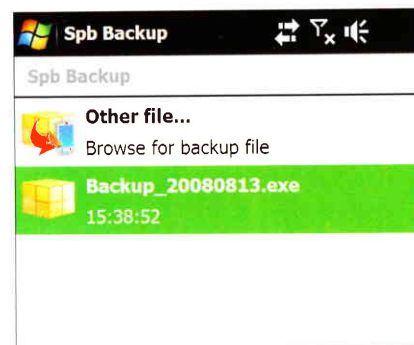


Fig 3 Choose your backup

Keep your backup files safe on your PC or card until you need them

FAQ

Can I restore backups between Pocket PC and Smartphone devices?

Officially this feature is not supported, although some users have reported success in their attempts. Worth a try at least!